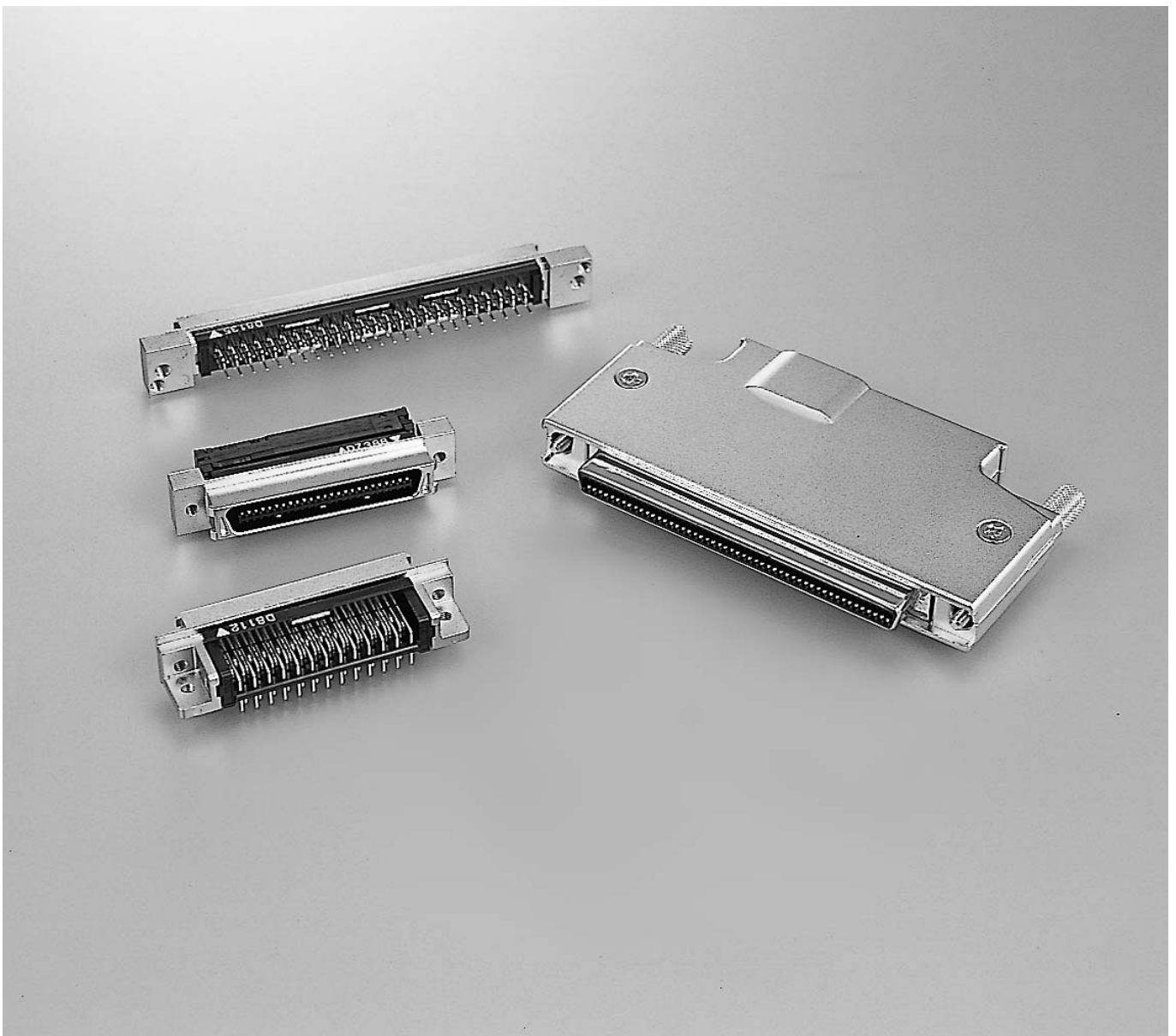




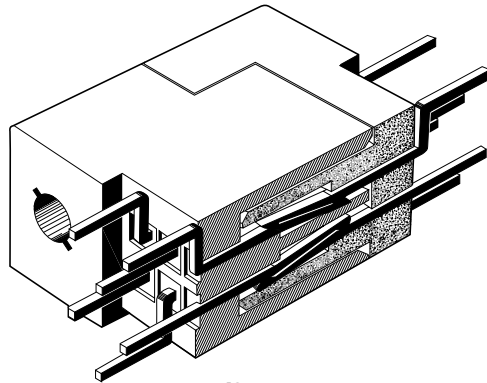
Fully EMI shielded I/O Connectors  
50mil(1.27mm) PITCH 2PIECE CONNECTOR

# 8840/8850/8855 SERIES



### Contact Concept

[Vertical 2-point Straight Beam]  
(PATENTED)



[Sectional view of contact area]

#### <Outline>

KEL has developed a unique straight beam contact with two independent mating points for male and female half pitch connectors which offers low insertion and withdrawal forces with high reliability. In response to the rapidly changing requirements for connectors, from cardedge to standard pitch two piece to half pitch two piece, KEL offers these connectors for today's requirement for high density and reliability.

#### Key Features

- 1) Balanced design insures stable contact pressure to improve reliability.
- 2) Contact surface is smooth and tapered to reduce insertion and withdrawal forces and increase connector life.
- 3) Lower cost because same contact is used for both male and female connectors.
- 4) Mating process of contacts is self-cleaning with a long wiping area.
- 5) Insulator aligns the mating connectors, prevents mis-insertion and protects the contacts from bending and breakage.

Outline & Application	Features
<p>&lt;Outline&gt;</p> <p>The 8840/8850/8855 Series are 1.27mm pitch EMI shielded interface connectors. Their design is the optimum for reducing the size, increasing the mounting density, and multiplying the function of electronic devices. In addition, numerous variations are available including receptacles with lateral and longitudinal cable exits.</p> <p>&lt;Application Areas&gt;</p> <p>These connectors are ideal for small office automation equipment, communication, control, and medical instruments.</p>	<ul style="list-style-type: none"> <li>● One-touch latch (20-80pin) for ease of use.</li> <li>● Maintains high contact pressure with low insertion and withdrawal forces.</li> <li>● Diecast cover controls EMI.</li> <li>● D-shape housing prevents mis-insertion.</li> <li>● Optional G connectors combines ground wires within 8840 Series-100 position cover</li> <li>● Insulator prevents deformation of contact.</li> <li>● Flat cable version of 8850 Series is available.</li> <li>● RoHS compliance</li> </ul>

Products	Type		Termination	Number of pins	Series	page
	Receptacle	Straight Cable exit	I.D.C.	20, 28, 34, 50 60, 68, 80, 100	8840	D-4
		Cable plug			8855	D-9
	Plug	Straight out	DIP Solder		8850	D-5~8
		Right Angle				
8840 Series(Receptacle) harness wiring diagram						D-10
8855 Series(Cable plug) harness wiring diagram						D-11~12
8840/8855 Series Termination tooling						D-15

## Specifications

### ■ Connector

- Insulator : Glass-filled 66 Nylon(UL94V-0)
- Contact : Copper alloy
- Plating : Mating area ; Gold over Nickel  
Terminal area ; Gold over Nickel (8840/8855)  
Tin copper over Nickel (8850)
- 8840 Series D-Shaped shell :  
Material ; Steel  
Plating ; Nickel over Copper
- Current rating : 0.5A per contact
- Contact resistance : 30mΩ max.
- Dielectric resistance : 650V AC for 1 minute
- Insulation resistance : 1,000MΩ min. at 500V DC
- Operating temperature : -55°C~+85°C
- Recommended Cable : #28 AWG(7/0.127)  
Outer diameter of insulation : 0.58mm

### ■ Cover and accessories (Materials and plating)

- Diecast cover :  
Zinc alloy(20-80 pins),  
Aluminum(100 pin),  
Plating : Nickel over Copper
- Spring lock :  
Stainless steel
- Lock screw :  
Steel with Nickel over Copper plating
- Cable clamp :  
Straight out : Stainless steel  
Horizontal out : Steel with Nickel over Copper plating
- Lock nut :  
Steel with Nickel over Copper plating

## Order Code

### ■ Connector

8840-□□□-174 □ □ -F

- Series : Receptacle
- No. of Contacts.  
20,28,34,50,60,68,80,100
- Contact style : 174
- Recommended Cable  
\* See recommended  
Cable mentioned under.
- Selective plating  
D : 0.25μm min.

● F : RoHS Compliance

### ■ Board Mounted Plug

8850-□□□-170 □ □ -F

- Series : plug
- No. of contacts  
20,28,34,50,60,68,80  
and ☆100.
- Terminal Style  
L : Right angle  
S : Straight
- Selective Plating  
D : 0.25 μm min

● F : RoHS Compliance

### ■ Lock Nut(100pin connector only)

8850-SR-□□

- Panel thickness  
01 : No panel  
02 : 0.8~1.0mm  
03 : 1.6mm  
05 : 0.8mm  
(Lock nut are sold in pairs)

- \* Recommended cable  
A : #28 AWG (7/0.127) Discrete wires  
B : #28 AWG (7/0.127) Laminated wires  
F : #28 AWG (7/0.127) Flat cable (8855 only)

☆100 pin of 8855 and 8850 : Please specify lock nut when you ordering

### ■ Cover for Straight Cable Exit

8840S-□□□-CVR

- No. of contacts  
20,28,34,50,60,68,80

\* Cover for Straight Cable Exit(100pin)

8840S-100-□-CVR

- Mounted panel thickness  
1 : No panel  
2 : 0.8~1.0mm  
3 : 1.6mm

### ■ Cable Plug

8855-□□□-174 □ □ -F

- F : RoHS Compliance
- Selective plating  
D : 0.25 μm min.

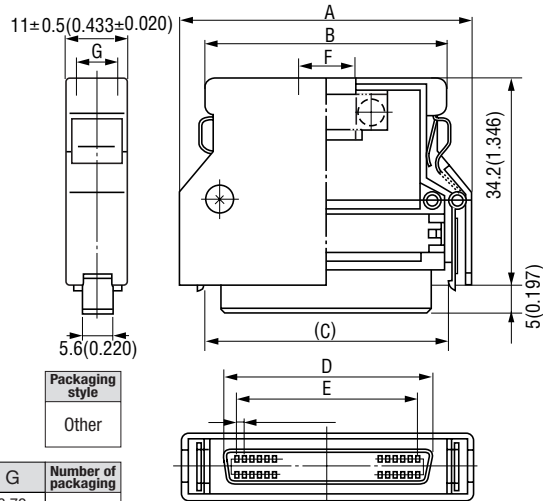
- Recommended Cable  
\* See recommended Cable  
mentioned under.

- No. of contacts  
20,28,34,50,68,80  
and ☆100.

8840 Series (20, 28, 34, 50, 60, 68, 80 pins) Straight Receptacle Cable Exit

Unit:mm(inch)

■ Receptacle & Cover



Packaging style  
Other

■ Product Table / Dimensions

No. of contacts	Part Number	A	B	C	D	E	F	G	Number of packaging
20	8840-020-174□D-F 8840S-020-CVR	30.00 (1.181)	22.30 (0.878)	21.30 (0.839)	16.48 (0.649)	11.43 (0.450)	6.70 (0.264)	6.70 (0.264)	80
28	8840-028-174□D-F 8840S-028-CVR	35.08 (1.381)	27.38 (1.078)	26.40 (1.039)	21.56 (0.849)	16.51 (0.650)	7.50 (0.295)	7.50 (0.295)	80
34	8840-034-174□D-F 8840S-034-CVR	38.89 (1.531)	31.19 (1.228)	30.20 (1.189)	25.37 (0.999)	20.32 (0.800)	8.70 (0.343)	8.70 (0.343)	80
50	8840-050-174□D-F 8840S-050-CVR	49.05 (1.931)	41.35 (1.628)	40.40 (1.591)	35.53 (1.399)	30.48 (1.200)	10.00 (0.394)	8.50 (0.335)	50
60	8840-060-174□D-F 8840S-060-CVR	55.40 (2.181)	47.70 (1.878)	46.70 (1.839)	41.88 (1.649)	36.83 (1.450)	11.00 (0.433)	8.50 (0.335)	50
68	8840-068-174□D-F 8840S-068-CVR	60.48 (2.381)	52.78 (2.078)	51.80 (2.039)	46.96 (1.849)	41.91 (1.650)	12.00 (0.472)	8.50 (0.335)	50
80	8840-080-174□D-F 8840S-080-CVR	68.10 (2.681)	60.40 (2.378)	59.40 (2.339)	54.58 (2.149)	49.53 (1.950)	13.00 (0.512)	8.50 (0.335)	50

8840 Series (100 pin) Straight Receptacle Cable Exit

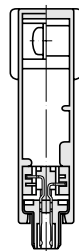
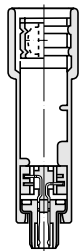
Unit:mm(inch)

■ Receptacle & Cover



X-X' Cross Section

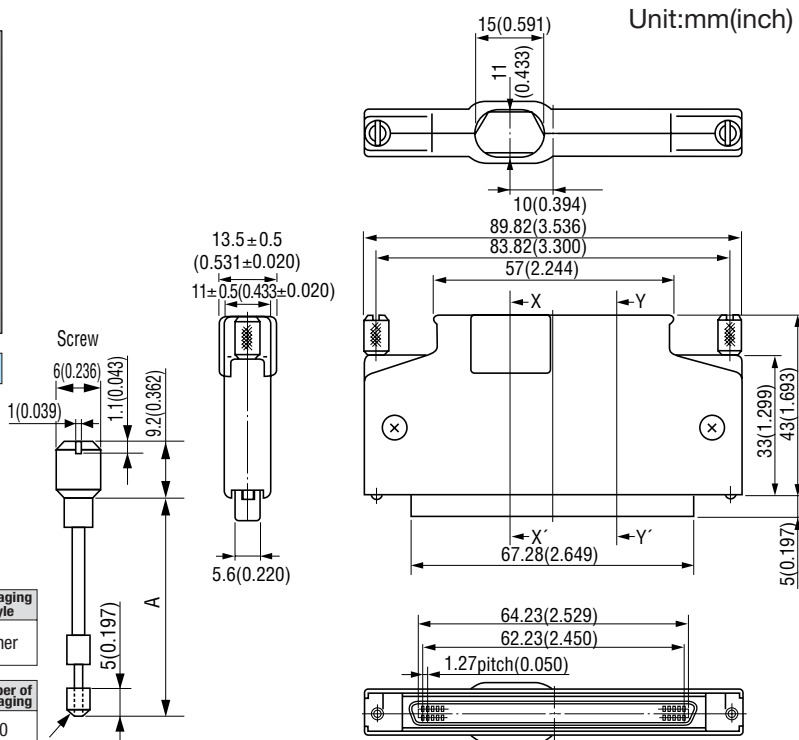
Y-Y' Cross Section



Packaging style  
Other

■ Product Table / Dimensions

Part Number	Mounted Panel Thickness	A	Number of packaging
8840-100-174□D-F 8840S-100-1-CVR	No Panel	33.8 (1.331)	50
8840-100-174□D-F 8840S-100-2-CVR	0.8~1.0mm	33.3 (1.311)	50
8840-100-174□D-F 8840S-100-3-CVR	1.6mm	32.8 (1.291)	50



M2.6

8850 Series (20,28,34,50,60,68,80pins) Straight Plug

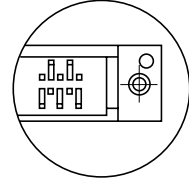
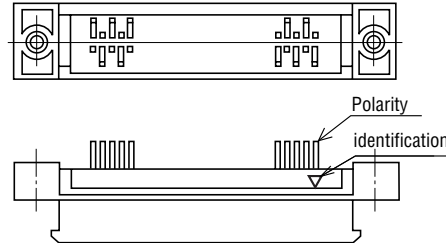
Unit:mm(inch)



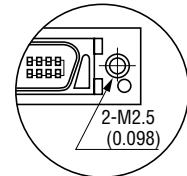
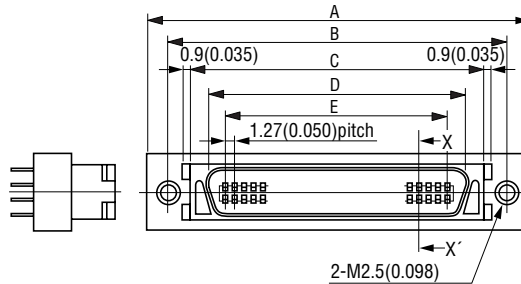
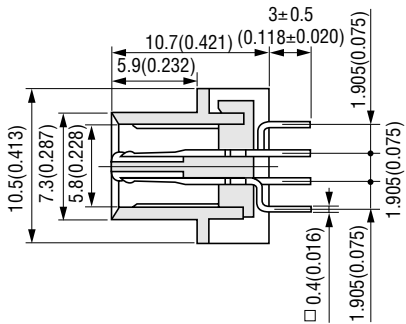
■ Straight Plug

20,50 pins

28,34,60,68,80 pins



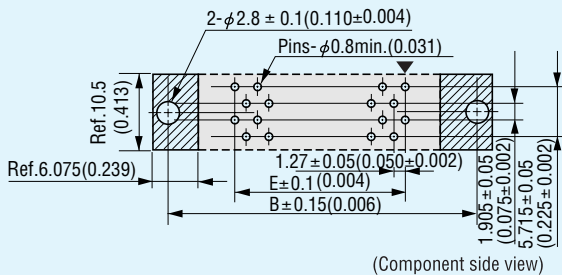
X-X' Cross Section



Printed Circuit Board Layout

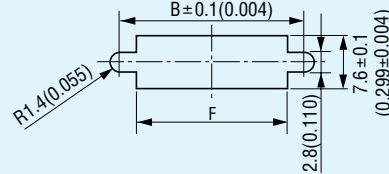
■ Straight Plug

34,50 pins Recommended P.C.B. thickness : 1.6 ± 0.19 (0.063 ± 0.007)



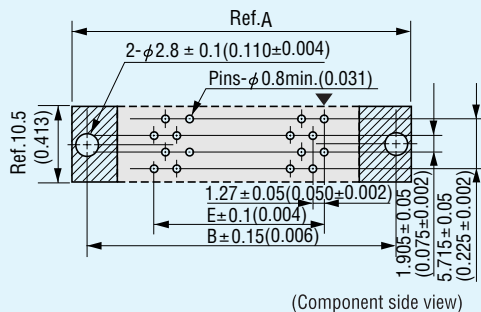
■ Panel Cutout

20,28,34,50,60,68,80 pins Recommended panel thickness : 2 (0.079) max.



20,28,60,68,80 pins

Recommended P.C.B. thickness : 1.6 ± 0.19 (0.063 ± 0.007)



■ Dimensions

No. of contacts	Dimensions						Number of packaging
	A	B	C	D	E	F	
20	33.40 (1.315)	27.40 (1.079)	21.60 (0.850)	16.73 (0.659)	11.43 (0.450)	24.40 (0.961)	15
28	38.48 (1.515)	32.48 (1.279)	26.68 (1.050)	21.81 (0.859)	16.51 (0.650)	29.48 (1.161)	13
34	42.29 (1.665)	36.29 (1.429)	30.49 (1.200)	25.62 (1.009)	20.32 (0.800)	33.29 (1.311)	11
50	52.45 (2.065)	46.45 (1.829)	40.65 (1.600)	35.78 (1.409)	30.48 (1.200)	43.45 (1.711)	9
60	58.80 (2.315)	52.80 (2.079)	47.00 (1.850)	42.13 (1.659)	36.83 (1.450)	49.80 (1.961)	8
68	63.88 (2.515)	57.88 (2.279)	52.08 (2.050)	47.21 (1.859)	41.91 (1.650)	54.88 (2.161)	7
80	71.50 (2.815)	65.50 (2.579)	59.70 (2.350)	54.83 (2.159)	49.53 (1.950)	62.50 (2.461)	7

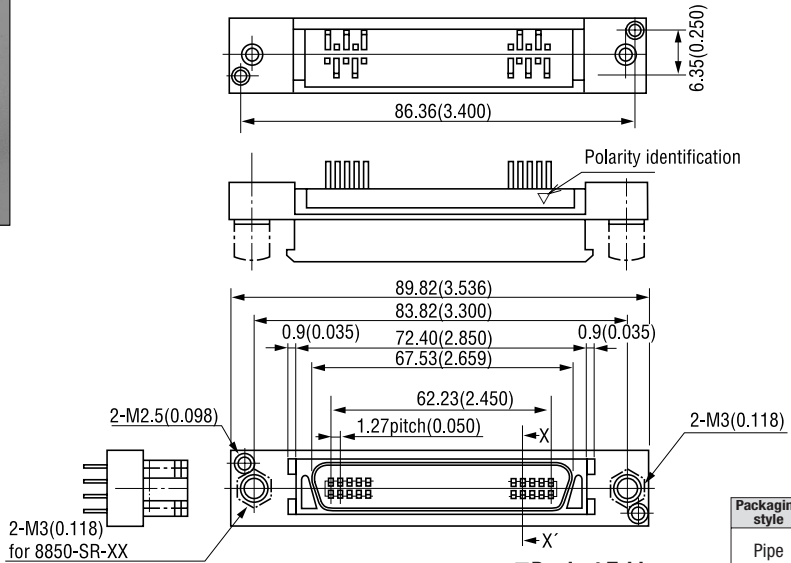
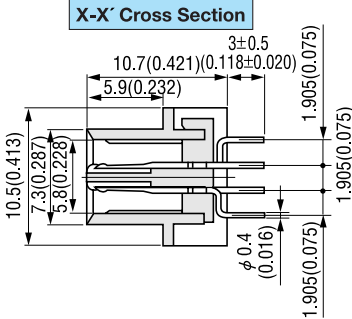
Packaging style
Pipe

### 8850 Series (100 pin) Straight Plug

Unit:mm(inch)



■ Straight Plug



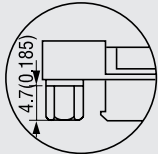
Packaging style
Pipe

■ Product Table

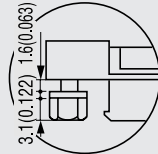
No. of contacts	Part Number	Number of packaging
100	8850-100-170SD-F	5

### Nut For Lock Screw

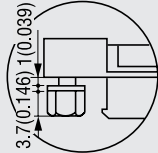
**8850-SR-01**  
(Without mounting panel)



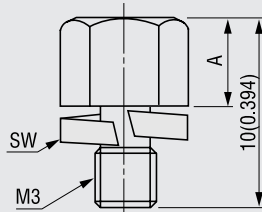
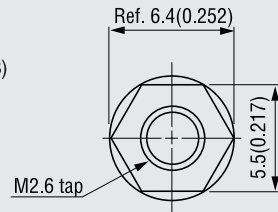
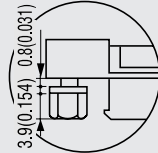
**8850-SR-03**  
Mounting panel : 1.6mm(0.063)



**8850-SR-02**  
Mounting Panel : 1.0mm(0.039)



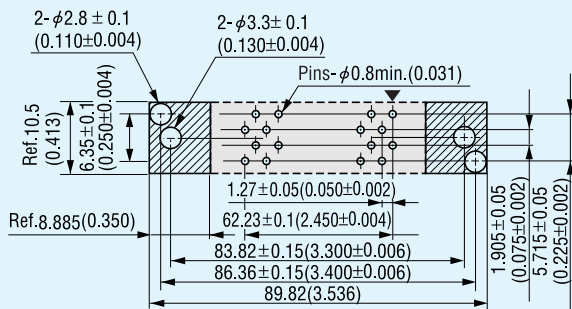
**8850-SR-05**  
Mounting panel : 0.8mm(0.031)



A	Part Number
4.7(0.185)	01(t0)
3.7(0.146)	02(t1.0)
3.1(0.122)	03(t1.6)
3.9(0.154)	05(t0.8)

### Printed Circuit Board Layout

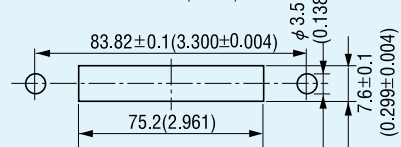
**100 pin** Recommended P.C.B thickness : 1.6±0.19(0.063±0.007)



(Component side view)

### ■ Panel cutout

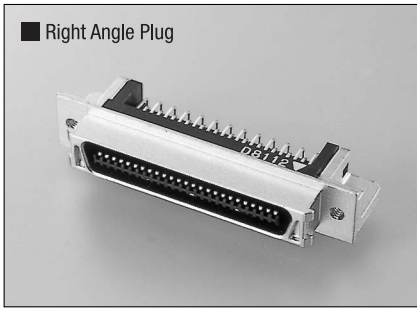
**100 pin** Recommended panel thickness:1.6(0.063) max.





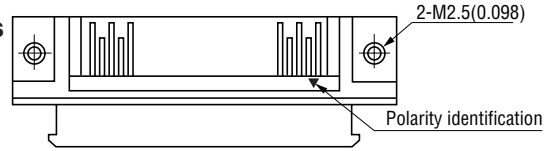
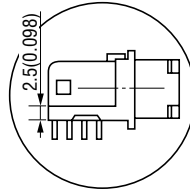
8850 Series (20,28,34,50,60,68,80 pins) Right Angle Plug

Unit:mm(inch)

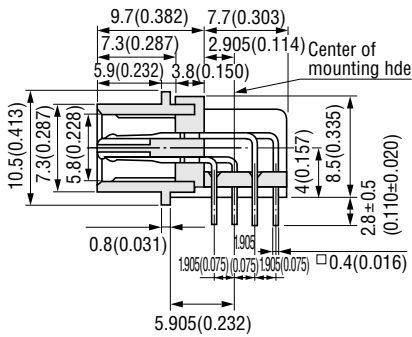


Right Angle Plug

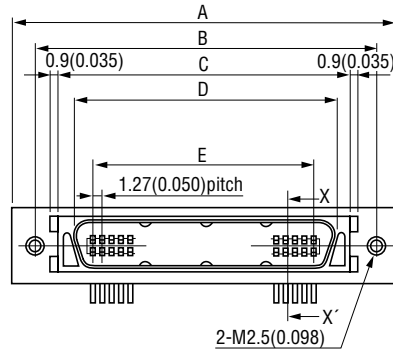
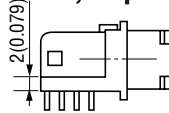
28,34,60,68,80 pins



X-X' Cross Section



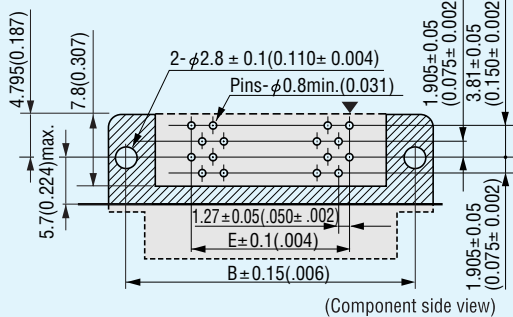
20,50 pins



Printed Circuit Board Layout

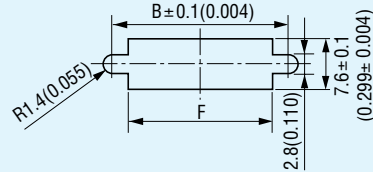
Right Angle Type

34,50 pins Recommended P.C.B. thickness : 1.6±0.19(0.063±0.007)



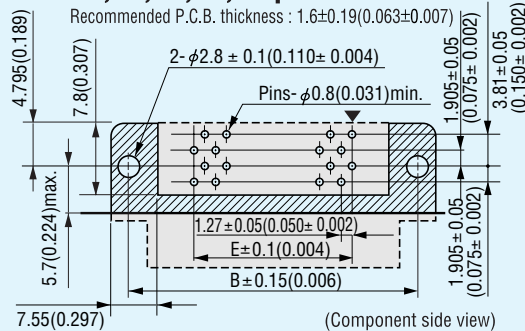
Panel Cutout

20,28,34,50,60,68,80 pins Recommended panel thickness : 2(0.079)max.



20,28,60,68,80 pins

Recommended P.C.B. thickness : 1.6±0.19(0.063±0.007)



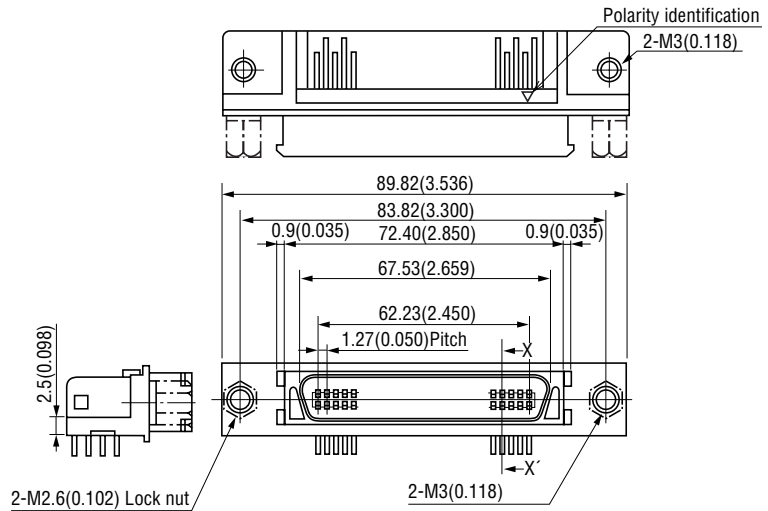
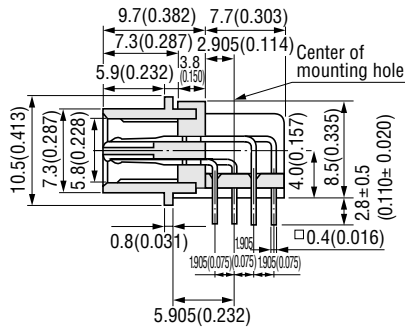
Dimensions

No. of contacts	A	B	C	D	E	F	Number of packaging
20	33.48 (1.315)	27.40 (1.079)	21.60 (0.850)	16.73 (0.659)	11.43 (0.450)	24.40 (0.961)	14
28	38.48 (1.515)	32.48 (1.279)	26.68 (1.050)	21.81 (0.859)	16.51 (0.650)	29.48 (1.161)	13
34	42.29 (1.665)	36.29 (1.429)	30.49 (1.200)	25.62 (1.009)	20.32 (0.800)	33.29 (1.311)	11
50	52.45 (2.065)	46.45 (1.829)	40.65 (1.600)	35.78 (1.409)	30.48 (1.200)	43.45 (1.711)	9
60	58.80 (2.315)	52.80 (2.079)	47.00 (1.850)	42.13 (1.659)	36.83 (1.450)	49.80 (1.961)	8
68	63.88 (2.515)	57.88 (2.279)	52.08 (2.050)	47.21 (1.859)	41.91 (1.650)	54.88 (2.161)	7
80	71.50 (2.815)	65.50 (2.579)	59.70 (2.350)	54.83 (2.159)	49.53 (1.950)	62.50 (2.461)	7

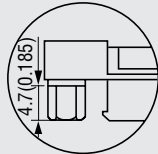
Packaging style
Pipe

**8850 Series (100 pin) Right Angle Plug**

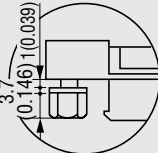
Unit:mm(inch)


**X-X' Cross Section**

**Nut For Lock Screw**
**8850-SR-01**

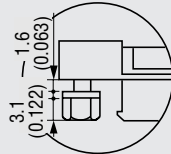
(Without mounting panel)


**8850-SR-02**

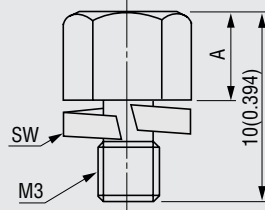
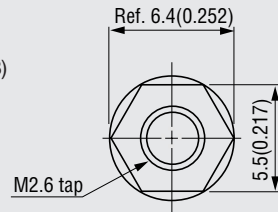
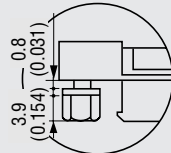
Mounting Panel : 1mm(0.039)


**8850-SR-03**

Mounting panel : 1.6mm(0.063)


**8850-SR-05**

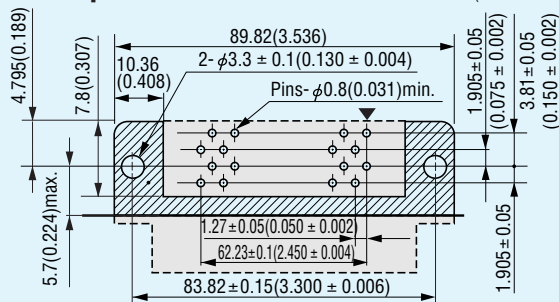
Mounting panel : 0.8mm(0.031)



A	Part Number
4.7(0.185)	01(t0)
3.7(0.146)	02(t1.0)
3.1(0.122)	03(t1.6)
3.9(0.154)	05(t0.8)

**Printed Circuit Board Layout**
**Right Angle plug**
**100 pin**

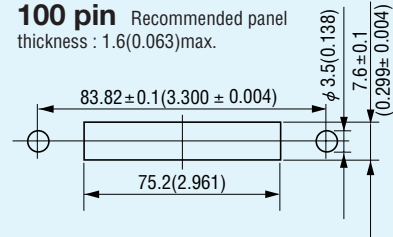
Recommended P.C.B. thickness : 1.6±0.19(0.063±0.007)



(Component side view)

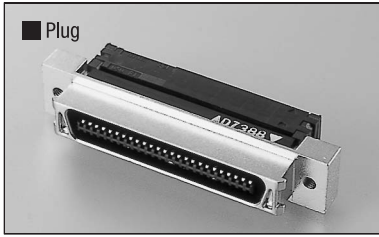
**Panel Cutout**
**100 pin**

Recommended panel thickness : 1.6(0.063)max.



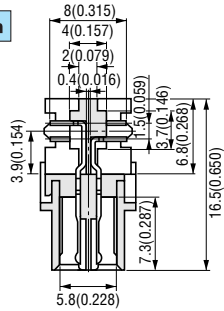


### 8855 Series (20,28,34,50,60,68,80 pins) Cable Plug



■ Plug

X-X' Cross Section

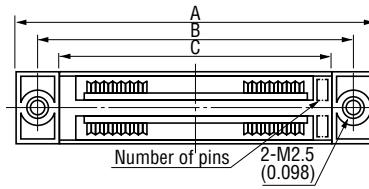


■ Dimensions

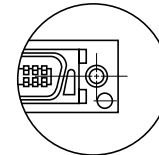
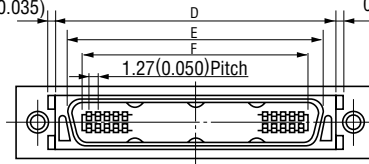
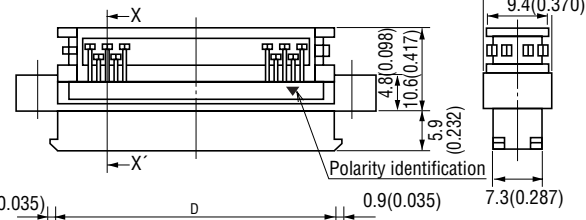
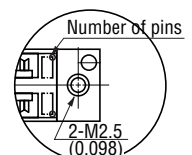
pin	A	B	C	D	E	F	Number of packaging
20	33.40 (1.315)	27.40 (1.079)	20.75 (0.817)	21.60 (0.850)	16.73 (0.659)	13.13 (0.517)	14
28	38.48 (1.515)	32.48 (1.279)	25.83 (1.017)	26.68 (1.050)	21.81 (0.859)	18.21 (0.717)	13
34	42.29 (1.665)	36.29 (1.429)	29.64 (1.167)	30.49 (1.200)	25.62 (1.009)	22.02 (0.867)	11
50	52.45 (2.065)	46.45 (1.829)	39.80 (1.567)	40.65 (1.600)	35.78 (1.409)	32.18 (1.267)	9
60	58.80 (2.315)	52.80 (2.079)	46.15 (1.817)	47.00 (1.850)	42.13 (1.659)	38.53 (1.517)	8
68	63.88 (2.515)	57.88 (2.279)	51.23 (2.017)	52.08 (2.050)	47.21 (1.859)	43.61 (1.717)	7
80	71.50 (2.815)	65.50 (2.579)	58.85 (2.317)	59.70 (2.350)	54.83 (2.159)	51.23 (2.017)	7

Packaging style
Pipe

#### 20,50 pins



#### 28,34,60, 68,80 pins

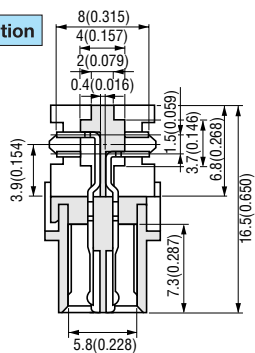


### 8855 Series (100 pin) Cable Plug



■ Plug

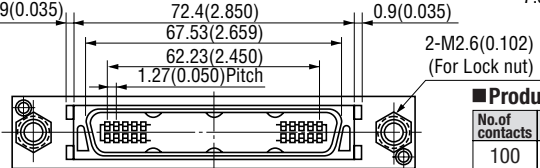
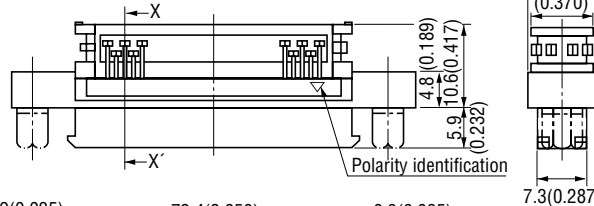
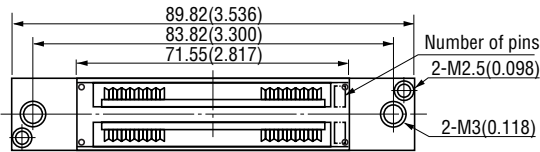
X-X' Cross Section



■ Dimensions

No. of contacts	A	B	No. of contacts	A	B
20	27.40 (1.079)	24.40 (0.961)	60	52.80 (2.079)	49.80 (1.961)
28	32.48 (1.279)	29.48 (1.161)	68	57.88 (2.279)	54.88 (2.161)
34	36.29 (1.429)	33.29 (1.311)	80	65.50 (2.579)	62.50 (2.461)
50	46.45 (1.829)	43.45 (1.711)	100	83.82 (3.300)	75.20 (2.961)

Unit:mm(inch)



Packaging style
Pipe

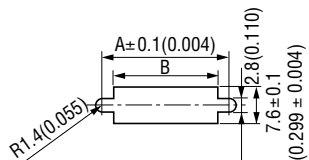
■ Product Table

No. of contacts	Part Number	Number of packaging
100	8855-100-174□-D-F	5

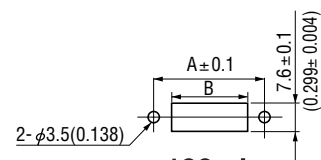
### Dimension for Panel Cutout

■ Dimensions

No. of contacts	A	B	No. of contacts	A	B
20	27.40 (1.079)	24.40 (0.961)	60	52.80 (2.079)	49.80 (1.961)
28	32.48 (1.279)	29.48 (1.161)	68	57.88 (2.279)	54.88 (2.161)
34	36.29 (1.429)	33.29 (1.311)	80	65.50 (2.579)	62.50 (2.461)
50	46.45 (1.829)	43.45 (1.711)	100	83.82 (3.300)	75.20 (2.961)



20,28,34,50,60,68,80 pins  
Recommended panel thickness : 2(0.079)max.



100 pin  
Recommended panel thickness: 1.6(0.063)

### Order Code

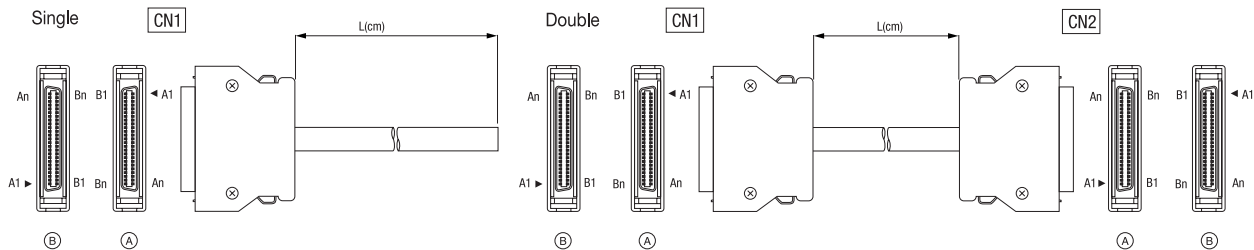
#### ■ Straight Cable Exit

8840 S-□□□-174 □ D F-□□□-□□□

- Series 8840
- Diecast Cover S : Straight cable exit
- Number of Contacts 20,28,34,50,60,68,80 pins
- Contact Type 174
- Recommended Cable A : AWG28(7/0.127)Discrete wires B : AWG28(7/0.127)Laminated wires

- Wiring identifier H : Standard wiring J : Semi-standard wiring
- Connector direction(Left : CN1, Right : CN2)
  - 1 : AA
  - 2 : AB
  - 3 : BA
  - 4 : BB
  - 5 : A
  - 6 : B
- Wiring Code S : Single W : Double
- Cable Length(cm)
- F : RoHS Compliance

- Gold Plating in Mating Area D : 0.25 $\mu$ m or min



### Order Code

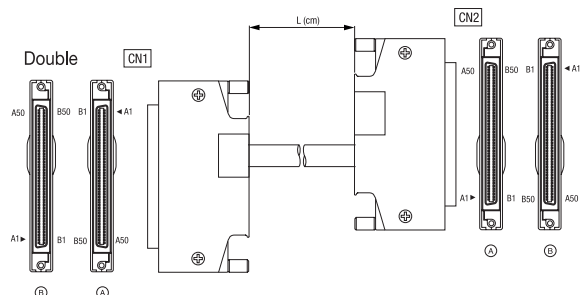
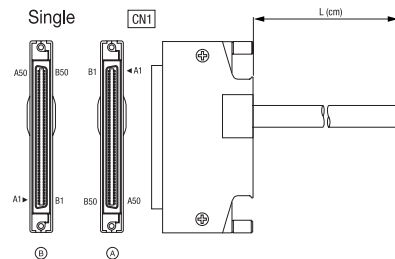
#### ■ Straight Cable Exit(100pins)

8840 S-100 -174 □ D F-□□□-□□□

- series 8840
- Diecast Cover S : Straight cable exit
- Number of Contacts 100 pins
- Contact Type 174
- Recommended cable A : AWG28(7/0.127)Discrete wires B : AWG28(7/0.127)Laminated wires

- Wiring identifier H : Standard wiring J : Semi-standard wiring
- Connector direction(Left : CN1, Right : CN2)
  - 1 : AA
  - 2 : AB
  - 3 : BA
  - 4 : BB
  - 5 : A
  - 6 : B
- Wiring Code S : Single W : Double
- Cable Length(cm)
- F : RoHS Compliance

- Mounting Panel Thickness
  - 1 : No panel
  - 2 : Panel thickness from 0.8~1.0mm
  - 3 : Panel thickness of 1.6mm
- Gold Plating D : 0.25 $\mu$ m or more



※Please consult our sales office for more information

★For harness quotations, a salesperson needs to contact you. Please contact your local sales office.  
 ★For S (Wiring Code), orders are accepted in even quantities.

### 8855-□□□-174□□ Cable Plug Order Code

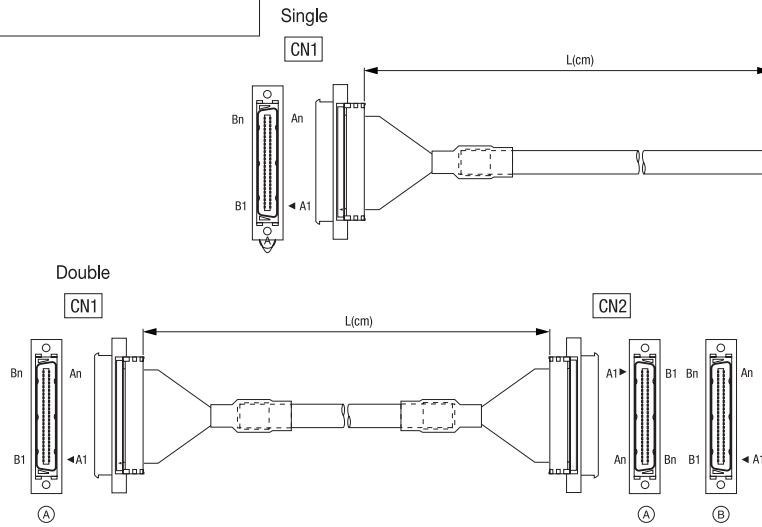
8855-□□□-174 □ D F -□□□-□ □

- Series  
8855
- Number of pins  
20,28,34,50,60,68,80,100 pins
- Contact Number  
174
- Recommended Cable  
A : AWG28(7/0.127)Discrete wires  
B : AWG28(7/0.127)Laminated wires
- Gold Plating  
D : 0.25  $\mu$ m min.(Standard)
- F : RoHS Compliance
- Cable Length(cm)

- Wiring Identifier  
H : Standard wiring  
J : Semi-standard wiring

- Connector Direction  
(Left : CN1, Right : CN2)
- 1 : AA } W : Double
- 2 : AB } S : Single
- 5 : A }

- Wiring Code  
S : Single  
W : Double



- For harness quotations, a salesperson needs to contact you. Please contact your local sales office.
- For S(Wiring Code), orders are accepted in even quantities.

### 8855 Series (Flat Ribbon Type) Order Code

#### ■ Straight Cable Exit

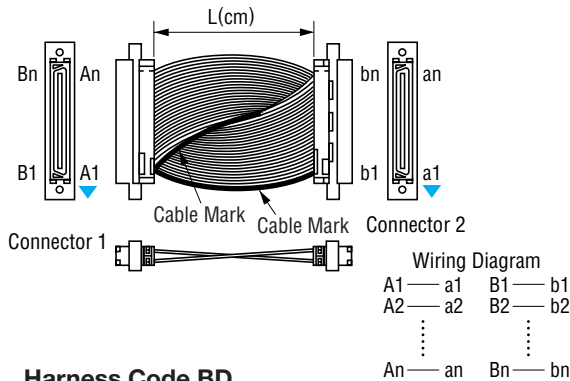
8855-□□□-174 F D F-□□□ □-□□ (C)

- Series 8855
- Number of pins 20,28,34,50,60,68,80,100 pins
- Contact Number 174
- Flat Cable F : AWG28(7/0.127)
- Gold Plating D : 0.25 μm or min.(Standard)
- Cable Length(cm)
- F : RoHS Compliance
- Wiring type Omit : Twist type C : Through type(Wiring code : BB)
- Wiring Code AA,AC,BB,BD,AO,CO
- Cable type Omit : Flat cable(Standard) S : Intermittent bonded cable\* T : Twist & Flat cable\*

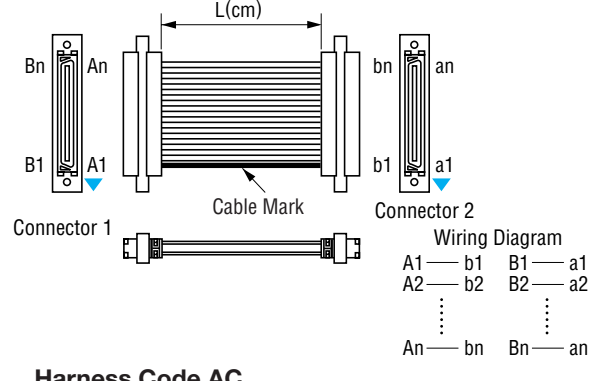
※ Only flat and twisted-flat cables are available for BB and BD-wired products.  
 ● Flat and twisted-flat cables have a limited L dimension as they are pressure-welded at the fused connections.

### 8855 Series (Flat Ribbon Type) Order Code

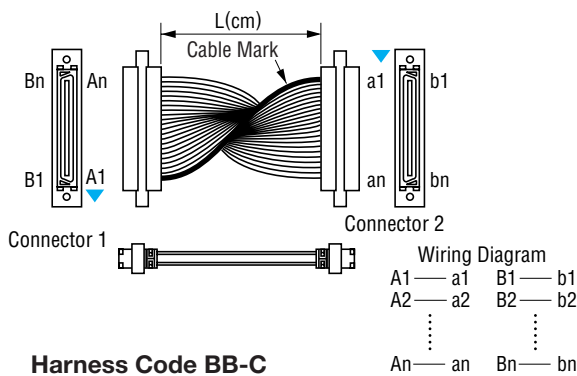
#### Harness Code BB



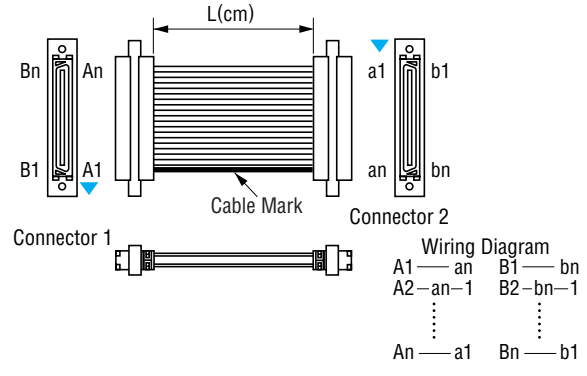
#### Harness Code AA



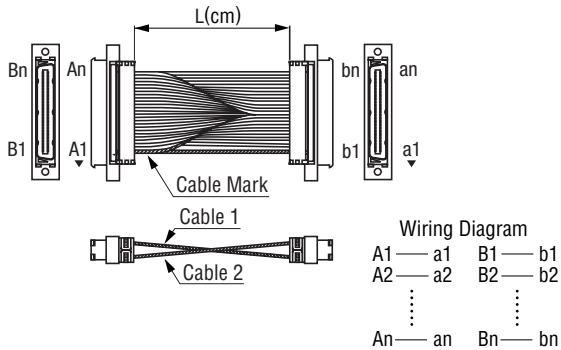
#### Harness Code BD



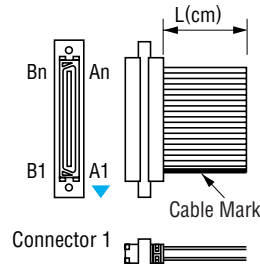
#### Harness Code AC



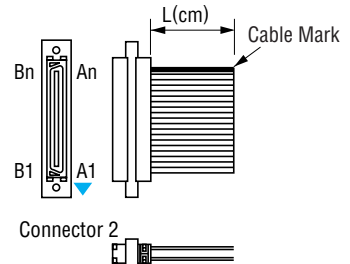
#### Harness Code BB-C



#### Harness Code AO



#### Harness Code CO



▼ = Polarity identification

- For harness quotations, a salesperson needs to contact you. Please contact your local sales office.
- For S, AO and CO (Wiring Codes), orders are accepted in even quantities.



### 8840/8855 Standard Wiring Table

Standard wiring table(20pin)

Wire No.	Twist No.	Wire Color	Mark Color	Marking	CN1 Pin No.	CN2 Pin No.
1	1	Orange	Red		A1	A1
2			Black		A2	A2
3	2	Gray	Red		A3	A3
4			Black		A4	A4
5	3	White	Red		A5	A5
6			Black		A6	A6
7	4	Yellow	Red		A7	A7
8			Black		A8	A8
9	5	Pink	Red		A9	A9
10			Black		A10	A10
11	6	Orange	Red		B1	B1
12			Black		B2	B2
13	7	Gray	Red		B3	B3
14			Black		B4	B4
15	8	White	Red		B5	B5
16			Black		B6	B6
17	9	Yellow	Red		B7	B7
18			Black		B8	B8
19	10	Pink	Red		B9	B9
20			Black		B10	B10

Standard wiring table(28pin)

Wire No.	Twist No.	Wire Color	Mark Color	Marking	CN1 Pin No.	CN2 Pin No.
1	1	Orange	Red		A1	A1
2			Black		A2	A2
3	2	Gray	Red		A3	A3
4			Black		A4	A4
5	3	White	Red		A5	A5
6			Black		A6	A6
7	4	Yellow	Red		A7	A7
8			Black		A8	A8
9	5	Pink	Red		A9	A9
10			Black		A10	A10
11	6	Orange	Red		A11	A11
12			Black		A12	A12
13	7	Gray	Red		A13	A13
14			Black		A14	A14
15	8	White	Red		B1	B1
16			Black		B2	B2
17	9	Yellow	Red		B3	B3
18			Black		B4	B4
19	10	Pink	Red		B5	B5
20			Black		B6	B6
21	11	Orange	Red		B7	B7
22			Black		B8	B8
23	12	Gray	Red		B9	B9
24			Black		B10	B10
25	13	White	Red		B11	B11
26			Black		B12	B12
27	14	Yellow	Red		B13	B13
28			Black		B14	B14

Standard wiring table(34pin)

Wire No.	Twist No.	Wire Color	Mark Color	Marking	CN1 Pin No.	CN2 Pin No.
1	1	Orange	Red		A1	A1
2			Black		A2	A2
3	2	Gray	Red		A3	A3
4			Black		A4	A4
5	3	White	Red		A5	A5
6			Black		A6	A6
7	4	Yellow	Red		A7	A7
8			Black		A8	A8
9	5	Pink	Red		A9	A9
10			Black		A10	A10
11	6	Orange	Red		A11	A11
12			Black		A12	A12
13	7	Gray	Red		A13	A13
14			Black		A14	A14
15	8	White	Red		A15	A15
16			Black		A16	A16
17	9	Yellow	Red		A17	A17
18			Black		B1	B1
19	10	Pink	Red		B2	B2
20			Black		B3	B3
21	11	Orange	Red		B4	B4
22			Black		B5	B5
23	12	Gray	Red		B6	B6
24			Black		B7	B7
25	13	White	Red		B8	B8
26			Black		B9	B9
27	14	Yellow	Red		B10	B10
28			Black		B11	B11
29	15	Pink	Red		B12	B12
30			Black		B13	B13
31	16	Orange	Red		B14	B14
32			Black		B15	B15
33	17	Gray	Red		B16	B16
34			Black		B17	B17
35	18	White	Red			
36			Black			

Standard wiring table(80pin)

Wire No.	Twist No.	Wire Color	Mark Color	Marking	CN1 Pin No.	CN2 Pin No.	Wire No.	Twist No.	Wire Color	Mark Color	Marking	CN1 Pin No.	CN2 Pin No.
1	1	Orange	Red		A1	A1	41	21	Orange	Red		B1	B1
2			Black		A2	A2	42	22	Gray	Red		B2	B2
3	2	Gray	Red		A3	A3	43	23	White	Red		B3	B3
4			Black		A4	A4	44	24	Yellow	Red		B4	B4
5	3	White	Red		A5	A5	45	25	Pink	Red		B5	B5
6			Black		A6	A6	46	26	Orange	Red		B6	B6
7	4	Yellow	Red		A7	A7	47	27	Gray	Red		B7	B7
8			Black		A8	A8	48	28	White	Red		B8	B8
9	5	Pink	Red		A9	A9	49	29	Yellow	Red		B9	B9
10			Black		A10	A10	50	30	Pink	Red		B10	B10
11	6	Orange	Red		A11	A11	51	31	Orange	Red		B11	B11
12			Black		A12	A12	52	32	Gray	Red		B12	B12
13	7	Gray	Red		A13	A13	53	33	White	Red		B13	B13
14			Black		A14	A14	54	34	Yellow	Red		B14	B14
15	8	White	Red		A15	A15	55	35	Pink	Red		B15	B15
16			Black		A16	A16	56	36	Orange	Red		B16	B16
17	9	Yellow	Red		A17	A17	57	37	Gray	Red		B17	B17
18			Black		A18	A18	58	38	White	Red		B18	B18
19	10	Pink	Red		A19	A19	59	39	Yellow	Red		B19	B19
20			Black		A20	A20	60	40	Pink	Red		B20	B20
21	11	Orange	Red		A21	A21	61	31	Orange	Red		B21	B21
22			Black		A22	A22	62	32	Gray	Red		B22	B22
23	12	Gray	Red		A23	A23	63	33	White	Red		B23	B23
24			Black		A24	A24	64	34	Yellow	Red		B24	B24
25	13	White	Red		A25	A25	65	35	Pink	Red		B25	B25
26			Black		A26	A26	66	36	Orange	Red		B26	B26
27	14	Yellow	Red		A27	A27	67	37	Gray	Red		B27	B27
28			Black		A28	A28	68	38	White	Red		B28	B28
29	15	Pink	Red		A29	A29	69	39	Yellow	Red		B29	B29
30			Black		A30	A30	70	40	Pink	Red		B30	B30
31	16	Orange	Red		A31	A31	71	31	Orange	Red		B31	B31
32			Black		A32	A32	72	32	Gray	Red		B32	B32
33	17	Gray	Red		A33	A33	73	33	White	Red		B33	B33
34			Black		A34	A34	74	34	Yellow	Red		B34	B34
35	18	White	Red		A35	A35	75	35	Pink	Red		B35	B35
36			Black		A36	A36	76	36	Orange	Red		B36	B36
37	19	Yellow	Red		A37	A37	77	37	Gray	Red		B37	B37
38			Black		A38	A38	78	38	White	Red		B38	B38
39	20	Pink	Red		A39	A39	79	39	Yellow	Red		B39	B39
40			Black		A40	A40	80	40	Pink	Red		B40	B40

Standard wiring table(60pin)

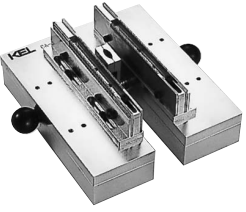


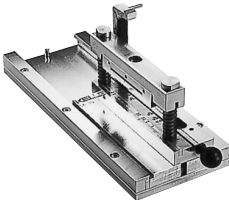
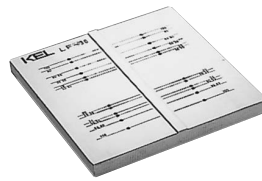

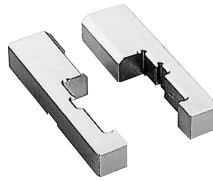

Wire No.	Twist No.	Wire Color	Mark Color	Marking	CN1 Pin No.	CN2 Pin No.
1	1	Orange	Red		A1	A1
2			Black		A2	A2
3	2	Gray	Red		A3	A3
4			Black		A4	A4
5	3	White	Red		A5	A5
6			Black		A6	A6
7	4	Yellow	Red		A7	A7
8			Black		A8	A8
9	5	Pink	Red		A9	A9
10			Black		A10	A10
11	6	Orange	Red		A11	A11
12			Black		A12	A12
13	7	Gray	Red		A13	A13
14			Black		A14	A14
15	8	White	Red		A15	A15
16			Black		A16	A16
17	9	Yellow	Red		A17	A17
18			Black		A18	A18
19	10	Pink	Red		A19	A19
20			Black		A20	A20
21	11	Orange	Red		A21	A21
22			Black		A22	A22
23	12	Gray	Red		A23	A23
24			Black		A24	A24
25	13	White	Red		A25	A25
26			Black		A26	A26
27	14	Yellow	Red		A27	A27
28			Black		A28	A28
29	15	Pink	Red		A29	A29
30			Black		A30	A30
31	16	Orange	Red		B1	B1
32			Black		B2	B2
33	17	Gray	Red		B3	B3
34			Black		B4	B4
35	18	White	Red		B5	B5
36			Black		B6	B6
37	19	Yellow	Red		B7	B7
38			Black		B8	B8
39	20	Pink	Red		B9	B9
40			Black		B10	B10
41	21	Orange	Red		B11	B11
42			Black		B12	B12
43	22	Gray	Red		B13	B13
44			Black		B14	B14
45	23	White	Red		B15	B15
46			Black		B16	B16
47	24	Yellow	Red		B17	B17
48			Black		B18	B18
49	25	Pink	Red		B19	B19
50			Black		B20	B20
51	26	Orange	Red		B21	B21
52			Black		B22	B22
53	27	Gray	Red		B23	B23
54			Black		B24	B24
55	28	White	Red		B25	B25
56			Black		B26	B26
57	29	Yellow	Red		B27	B27
58			Black		B28	B28
59	30	Pink	Red		B29	B29
60			Black		B30	B30
61	31	Orange	Red		B31	B31
62			Black		B32	B32
63	32	Gray	Red		B33	B33
64			Black		B34	B34
65	33	White	Red		B35	B35
66			Black		B36	B36
67	34	Yellow	Red		B37	B37
68			Black		B38	B38

Standard wiring table(68pin)

Wire No.	Twist No.	Wire Color	Mark Color	Marking	CN1 Pin No.	CN2 Pin No.
1	1	Orange	Red		A1	A1
2			Black		A2	A2
3	2	Gray	Red		A3	A3
4			Black		A4	A4
5	3	White	Red		A5	A5
6			Black		A6	A6
7	4	Yellow	Red		A7	A7
8			Black		A8	A8
9	5	Pink	Red		A9	A9
10			Black		A10	A10
11	6	Orange	Red		A11	A11
12			Black		A12	A12
13	7	Gray	Red		A13	A13
14			Black		A14	A14
15	8	White	Red		A15	A15
16			Black		A16	A16
17	9	Yellow	Red		A17	A17
18			Black			





<p>■ CA-10-1 Cable assembly base for discrete wire</p>  <p>Base for use with pusher and combs</p>	<p>■ CA-10-2 Pusher</p>  <p>For pressing discrete wires in CA-10-4 comb.</p>	<p>■ CA-10-4(for <math>\phi 0.62</math>)Comb</p>  <p>Aligns discrete wires in cover of the connector</p>	<p>■ CA-30 Cable assembly base for laminated wire</p>  <p>Press laminated cable into the cover of the connector.</p>
<p>■ LF-30-1 Locating Fixture</p>  <p>Terminates 8840/55 to laminated or discrete wire.</p>	<p>■ LF-30-2 Guide</p>  <p>Positions 8840 for termination</p>	<p>■ LF-30-3 Guide</p>  <p>Positions 8855 for termination</p>	<p>■ LF-30-4 Seating platen</p>  <p>Applies pressure for termination of 8840/55</p>

■ Assembly tool combinationb

Series		Jig	Hand press	Cable assembly base	Pusher	Comb	Locating fixture	Guide	Seating platen	Option
8840 Series (Receptacle)	Discrete wire cable		HP-12	CA-10-1	CA-10-2	CA-10-4( $\phi 0.62$ )	LF-30-1	LF-30-2	LF-30-4	ST-10 Sliding base
	Laminated cable	Cable assembly base for laminated wire CA-30								
8855 Series (Cable plug)	Discrete wire cable			CA-10-1	CA-10-2	CA-10-4( $\phi 0.62$ )	LF-30-3			
	Laminated cable	Cable assembly base for laminated wire CA-30								

(Notice)When you want to use discrete wire, you need the additional cable cutter (CT-14)


**OPTIONAL TOOLING**

■ HP-12 Hand press



■ ST 10 Sliding base

Sliding base increases output for all types of 8840/55 assemblies, and can be used with all assembly tooling in HP-12 press.



Specifications and dimensions are subject to change without notice.